



58 Lincoln House, London SW3

**MARLER  
& MARLER**

# 58 Lincoln House, London SW3

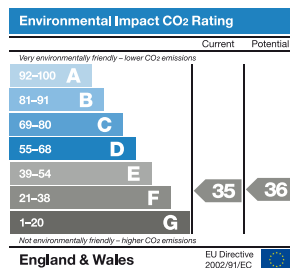
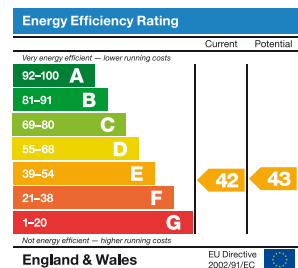
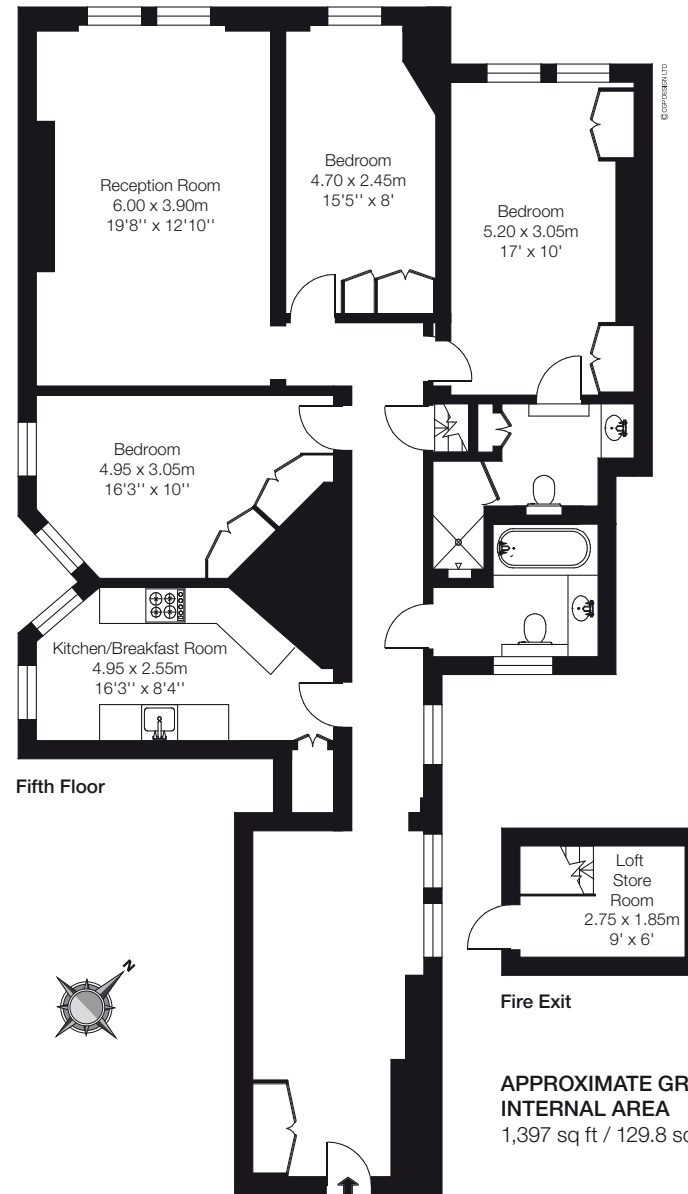
Located in this popular mansion building in the heart of Knightsbridge is this immaculately presented three bedroom top (fifth) floor flat. The building benefits from a lift and resident porter and is maintained beautifully.

## ACCOMMODATION

- 3 Bedrooms
- 2 Bathrooms (1 En Suite)
- Reception Room
- Kitchen/Breakfast Room
- Loft Store Room
- Lift
- Resident Porter

## TERMS

**Tenure:** Share of Freehold  
**Service Charge:** Currently approximately £7,888.80 per annum  
**Local Authority:** The Royal Borough of Kensington and Chelsea  
**Price:** £3,300,000 Subject to Contract



**APPROXIMATE GROSS INTERNAL AREA**  
 1,397 sq ft / 129.8 sq m



NB: We wish to advise prospective purchasers that these sales particulars are believed to be correct, but their accuracy is in no way guaranteed, nor do they form part of any contract. We have not carried out a detailed survey nor tested the services, appliances or specific fittings. Measurements are approximate. January 2012. Photography and brochure by cgpdesign.com 020 7222 7222

**MARLER & MARLER**

020 7235 9641  
 marlerandmarler.co.uk